

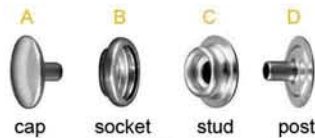
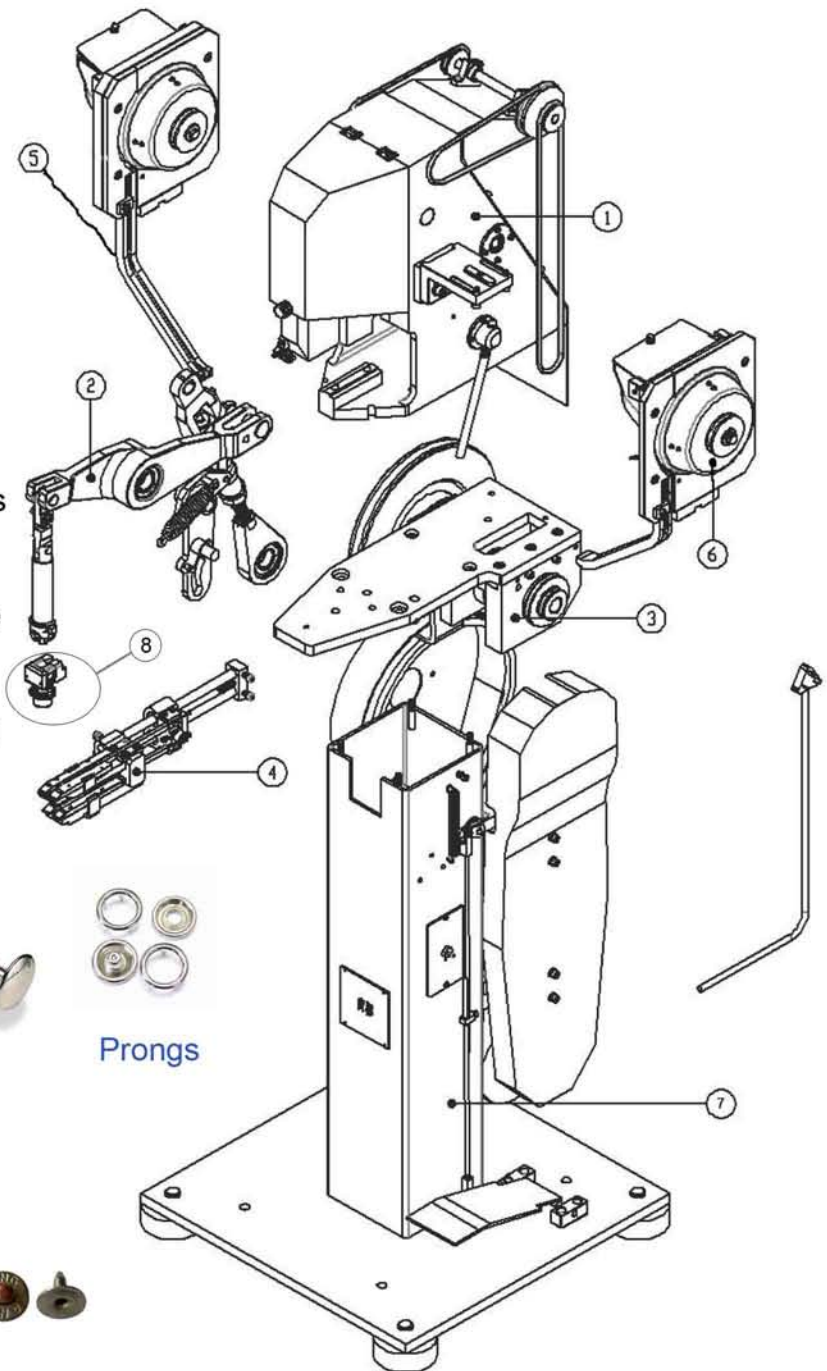
Fully automatic snap attaching machine



FT-400 PARTS DESCRIPTION

1. Housing parts
2. Transmission parts
3. Central axis part
4. Pushing parts
5. Snap feeder
6. Snap hopper & turning wheel
7. Machine chassis
8. Die-set

NOTE: Typically **two** machines are required to complete a full set of press fastener (see below A / B / C / D). One machine is for attaching Part 1 (**Cap & Socket**) and another machine is for Part 2 (**Stud & Post**). Only one fixed size of snap can be attached. Using other types or sizes of snap will cause machine malfunctioning and machine will not work properly.



Press fasteners



Prongs

Below buttons require **one** machine only:



Eyelets

Shanks

Rivets

CAUTION!

FOUR PARTS (SEE ABOVE PARTS NO. 4, 5, 6 & 8) HAVE TO BE REPLACED IF CHANGING FROM ONE SNAP TO ANOTHER ON THE EXISTING MACHINE BECAUSE THE SNAP DIAMETER AND THICKNESS ARE CRUCIAL TO ENSURE THE SMOOTHNESS IN THE OVERALL AUTOMATIC MECHANISM.

CHANGING PARTS IS NOT RECOMMENDED AND SHOULD NOT BE DONE ON A DAILY OR WEEKLY BASIS. OTHERWISE, SNAPS WILL BE JAMMED AND MACHINE WILL MALFUNCTION. SNAP VARIES AND CANNOT BE USED THEORETICALLY IN THE SAME MACHINE.